

BlackVue Viewer Pro – Interface Guide

Adjust language, file location, map speed unit

Create an account, check usage, change password, logout

Open for GPS tracking and to manage Geo-fences

Access help, video tutorials, terms of use, latest news from BlackVue, all notifications

About BlackVue Cloud Viewer

Your BlackVue account

Click X to close the current file and return to the map

Playback screen

Click to start or end Live View

- Double-click a camera to start Live View.
- Click to modify camera settings, view camera info, change camera name, unregister a camera or share with...

Register a BlackVue dashcam to your account

Select to view files in the BlackVue, Cloud Storage, or Local Disk.
* Click to change the Local Disk file storage location.

Filter files by direction and recording mode:

- : Front
- : Rear
- : Normal
- : Event
- : Parking
- : Manual

Recorded file list

- Double-click a file to play.
- Tick the box next to file(s) and click "Copy to Cloud" or "Copy to Local Disk".

Click to turn on/off the voice communication feature.

Map screen

Click to switch to multi Live View streaming (Pro feature)

Fit to playback screen

Flip horizontally

Flip upside-down

View full screen

GPS Tracking

Click to go to Geo-fencing menu

Print GPS tracking map screen

Map full screen

Click an arrow to view details.
*A red arrow indicates an event recording (impact detection or over speed)

Line segments are colored according to the average recorded speed.
 ■ 0 km/h to less than 30 km/h
 ■ 30 km/h to less than 60 km/h
 ■ 60 km/h to less than 90 km/h
 ■ 90 km/h and above

Start point
End point

Print tracking log table

Export tracking log table

Tracking Logs

1 Select your camera

Geo-fence

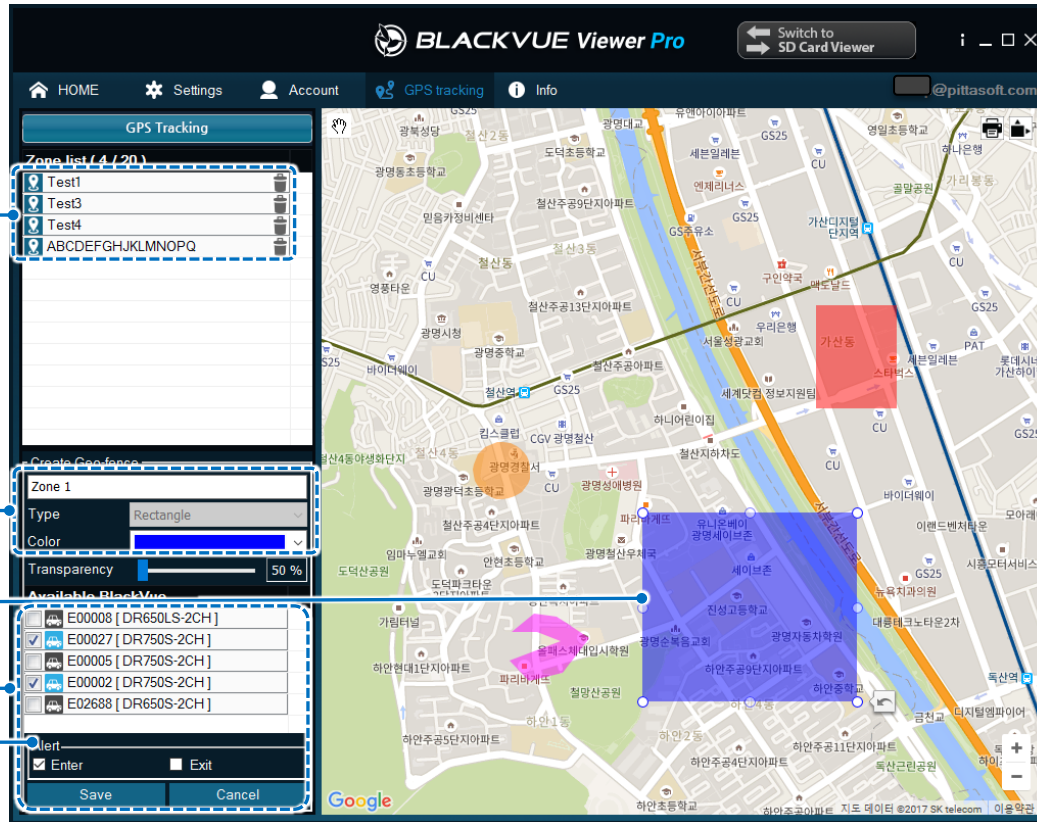
2 - Select the start date and time.
- Select the end date and time.
- Choose sampling interval

3 Click Search

No.	Date & Time	Speed	Data Type	Status	Coordinates
1	2017-09-12 16:00:54	0 km/h	Normal		37.473427, 126.869351
2	2017-09-12 16:01:56	0 km/h	Normal		37.474433, 126.875531
3	2017-09-12 16:07:17	44 km/h	Normal		37.482217, 126.872071
4	2017-09-12 16:08:17	18 km/h	Normal		37.481412, 126.871751
5	2017-09-12 16:09:17	19 km/h	Normal		37.480870, 126.865811
6	2017-09-12 16:10:17	0 km/h	Normal		37.481185, 126.865431
7	2017-09-12 16:11:20	47 km/h	Normal		37.478518, 126.863811

Geo-fencing

Create a Geo-fence



List of saved Geo-fences

- 1 Type Geo-fence name; choose its shape, color
- 2 Draw the Geo-fence on the map and adjust its transparency
- 3 Select the dashcams, alerts type and click Save

Alerts types:

Enter/Exit: You will be alerted on your smartphone when vehicle enters/exits a Geo-fence.

Pass: You will be alerted on your smartphone when vehicle passes through a polyline Geo-fence.

Geo-fencing

Edit a Geo-fence

Click to go to GPS tracking menu

① Click on the Geo-fence that you want to edit

Click to delete a Geo-fence

Resize/reshape a Geo-fence by clicking and dragging the circular points on it

② Edit the selected Geo-fence

BLACKVUE Viewer Pro

HOME Settings Account GPS tracking Info @pittasoft.com

GPS Tracking

Zone list (4 / 20)

- Test1
- Test3
- Test4
- ABCDEFGHIJKLMNOQ

Test3

Type: Circle

Color: Orange

Transparency: 50%

Available BlackVue

- E00008 [DR650LS-2CH]
- E00027 [DR750S-2CH]
- E00005 [DR750S-2CH]
- E00002 [DR750S-2CH]
- E02688 [DR650S-2CH]



Alert

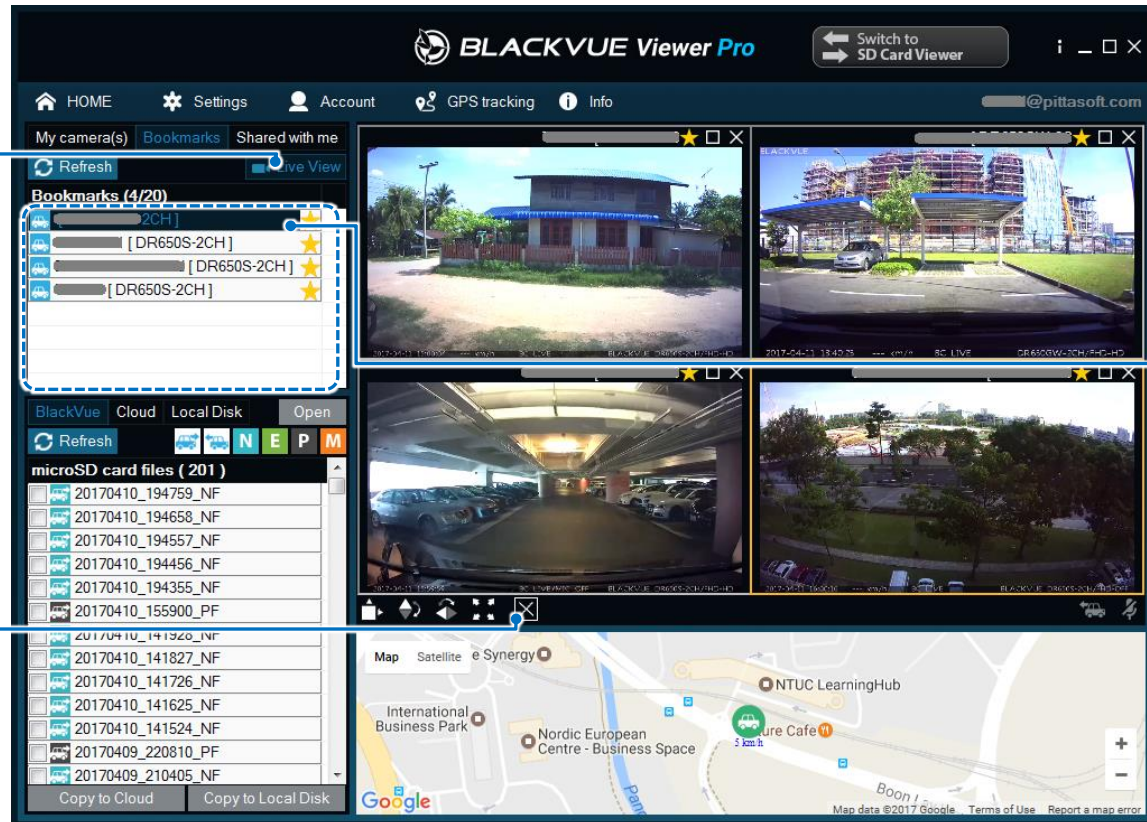
- Enter
- Exit

Save Cancel

Multi Live View Streaming

- ① - Click to start or end Live View; or
- Double-click a camera to start Live View

- ② - Click  to switch to multi Live View streaming.
- Click  to end all Live View streaming.



- ③ - Double-click a camera to add to Live View; or
- Drag and drop a camera into a quadrant of the playback screen to start Live View.